



A-Qua Mailer™ Desktop & Web



Mail Data Processing Solutions

Save on Costs and Increase Processing Efficiency

- CASS Certified™ ZIP + 4® coding, NCOA Link® processing, Dupe ID / Elimination, DSF2®, and PAVE™ Certified Postal Presort are included in the basic service.
- Easy maintenance and no directories to install mean less dependence on valuable resources.
- Automatic updates assure that you are accessing the most up-to-date mail data processing available.
- Various pricing plans allow for flexible budgeting.

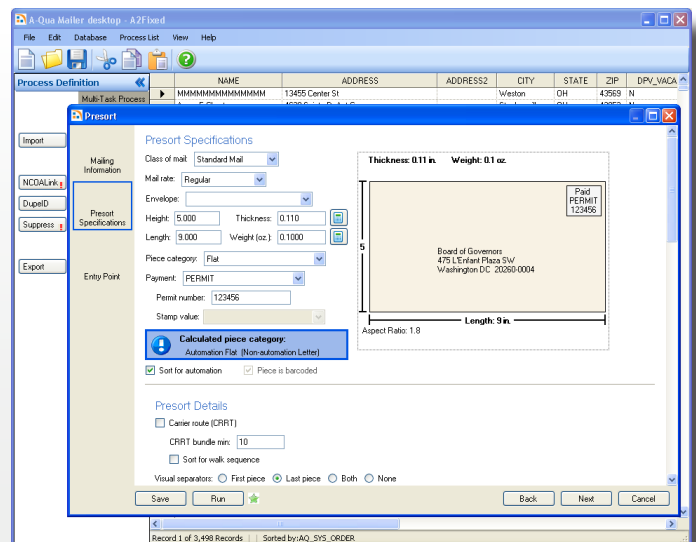


- Grid view for data manipulation and editing.
- Concurrent job submission.
- Easy to use, intuitive interface.
- Merge multiple files and standardize headings.
- All functionality available within the same application.
- Automatic updates.

Rely on Expert Support

- Lorton Data provides excellent one-to-one customer support via live chat, email, and phone.
- Lorton Data is a USPS® Full Service licensee for NCOA Link® processing.
- Lorton Data has 25 years of experience in the postal industry, and continually monitors changing regulations.

Presort screen in A-Qua Mailer desktop



A-Qua Mailer™ web

- Access services from anywhere, anytime with an internet connection.
- No software to install or maintain.
- Easy to use, intuitive interface.
- Secure connection for data protection.
- Fully automated with A-Qua Mailer command.

Presort screen in A-Qua Mailer web

The screenshot displays the 'Presort Specifications' screen in the A-Qua Mailer web interface. It features a navigation bar at the top with 'Main Menu', 'Manage Templates', 'Help', and 'Logout'. The main content area is divided into several sections:

- Mail Piece Specifications:** Includes fields for 'Class of mail' (Standard Mail), 'Mail rate' (Regular), 'Height (in): 4', 'Length (in): 6', 'Sample thickness (in): 0.1', 'Sample weight (oz): 1', and 'Sample count: 1'. A 'Periodicals Options' button is also present.
- Dimensions and Weight:** A preview window shows a mail piece with 'Thickness: 0.01 in', 'Weight: 0.1 oz', and 'Length: 6 in'. It also displays a postage permit label for 'Board of Governors, 475 L'Enfant Plaza, SW, Washington DC, 20260-0004'.
- Presort Details:** Includes checkboxes for 'Sort for automation', 'Carrier route (CRRT)', 'CRRT bundle mint', 'Sort for walk sequence', and 'Manifest mailing'. It also has a 'Batch size' field set to 20.
- Postage payment:** Includes a 'Permit number' field set to 123 and a 'Stamp value' dropdown.
- Visual separators:** Includes radio buttons for 'First piece', 'Last piece', 'Both', and 'None'.
- Election/Political:** Includes dropdowns for 'Election/Political' (Neither) and 'Incentives' (None).
- Container Options:** Includes checkboxes for 'Trays', 'Sacks', and 'Packages'.

Lorton Data

Lorton Data provides, manages, and analyzes data to enhance customers' multichannel marketing efforts. From direct mail, to email, phone, advertising and social media campaigns, Lorton Data's strategic approach, extensive capabilities, and renowned customer service result in higher returns on your marketing investment.

Gateways to services include cloud-based A-Qua™ solutions, and expert assisted A-View™ services. Both methods enable organizations to create and maintain profitable interactions with their target audience.

Benefit from Robust Features

- **Job Templates and Profiles**
Speed up entry process for repeat jobs.
- **PAF Storage and Management**
Electronically view and manage previously submitted PAFs.
- **Full-Service Intelligent Mail® Barcode (IMb™) Unique ID Management**
Easily refer to all of your unique serial numbers associated with Full-Service IMb jobs.
- **Intelligent Mail® Package Barcode (IMpb) Support**
Specify the Postal Service's next generation tracking barcode for parcels and extra services.
- **Account Management**
User administrative functionality.
- **Submit Multiple Services at the Same Time**
Save time by choosing all the services for your job at once. No need to start over for each service.

